



UNIVERSITY OF
BIRMINGHAM

CITY
REDI

WM
REDI



@CityREDI

@civicuniversity

#trulycivic



Civic University
Network



Civic Universities and Inclusive Local Economic Recovery

A Civic University Network Webinar hosted by City-REDI, University of Birmingham (30/9/2020)

Welcome

Simon Collinson

Deputy Pro-Vice-Chancellor,
Director, WM REDI and City-REDI
Professor of International Business and Innovation,
Birmingham Business School, University of
Birmingham.



UNIVERSITY OF
BIRMINGHAM

CITY
REDI

WM
REDI

Civic Universities and
Inclusive Local Economic Recovery



@CityREDI
@civicuniversity
#trulycivic

Agenda

Civic Universities and Inclusive Local Economic Recovery

- 10.00 Welcome and introduction
- 10.05 The national context: the role of universities in connecting economic growth and social inclusion.
- 10.35 Break
- 10.40 Regional partnership examples: Universities working with local stakeholders.
What works well and what needs to work better?
- The West Midlands
 - The North East
 - The Glasgow City Region
- 11.15 The way ahead for developing better civic university contributions to regions.
Recommendations and next steps. Open Q&A and comments with audience and speakers.
- 11.30 END



UNIVERSITY OF
BIRMINGHAM

CITY
REDI

WM
REDI



@CityREDI
@civicuniversity
#trulycivic



Civic University
Network

The national context: the role of universities in connecting economic growth and social inclusion



Lord David Willetts (President - Resolution Foundation)
& Sarah Davidson (CEO - Carnegie UK Trust)

in conversation with

Lord Robert Kerslake (Chair of the Civic University Commission)



UNIVERSITY OF
BIRMINGHAM

CITY
REDI

WM
REDI

Civic Universities and
Inclusive Local Economic Recovery



@CityREDI
@civicuniversity
#trulycivic



UNIVERSITY OF
BIRMINGHAM

CITY
REDI

WM
REDI



@CityREDI

@civicuniversity

#trulycivic



Civic University
Network



5 minute break

Regional partnership examples: Universities working with local stakeholders. What works well and what needs to work better?



Chair: John Goddard, Professor of Universities and Cities, University of Birmingham and formerly Vice Chair of the Civic University Commission

The West Midlands

Rebecca Riley (University of Birmingham)

Jonathan Skinner (West Midlands Combined Authority)

The North East

Professor Jane Robinson (Newcastle University)

Dr Henry Kippin (North of Tyne Combined Authority)

The Glasgow City Region

Professor Des McNulty (Glasgow University)

Kevin Rush (Glasgow City Council)



UNIVERSITY OF
BIRMINGHAM

CITY
REDI

WM
REDI



@CityREDI

@civicuniversity

#trulycivic



West Midlands Case study

Rebecca Riley
Business Development
Director WMREDI
Head of Research & ODA
WMCA

Jonathan Skinner
Head of Economy
and Local Industrial
Strategy WMCA

In partnership with:



Coventry & Warwickshire
Local Enterprise Partnership



What is happening in the WM?

What does good look like? - The region being able to pinpoint and prioritise policy problems and assess different solutions

Our approach – Collaborative structure between universities and policy organisations to co-create research and evaluation

What do policy makers want from universities?

- Analysis and evidence of societal change and problems
- Change catalysts in their own right – brain gain; inward investment; research output & funding, innovation, place investor, business support
- Bringing ideas and perspectives about evidence- based solutions and impacts
- Able to bring rigour and brokerage at points of the policy process

What do universities want from policy makers?

- To be open to evidence and research, willing to collaborate on it and to act on it
- Support for investment, growth and development
- An understanding of strategic aims and objectives that the region is seeking to achieve and how universities fit in and can contribute
- Understanding of the wider contribution of universities to place

Challenges and opportunities of bringing it together?

- Project based strategy or strategy based projects?
- Leadership: institutions, powers and resources
- Democratisation: how to include citizens?
- Conflicting purposes:
 - speed v blue skies;
 - collaboration v contracting;
 - baselining v innovating;
 - academic v policy uses

Building the Post-Covid Economy

Our collaboration in the North of Tyne

Jane Robinson & Henry Kippin

30.09.20

We are building a collaboration with our Universities around shared mission... and post-Covid recovery



5 Transport, infrastructure and connectivity

A connectivity strategy to secure the digital commute in a connected region



4 Fiscal innovation, health and prevention

A radical 'health and growth' package to underpin safe and rapid recovery



1 Jobs, skills and livelihoods

A bold human capital strategy to save jobs and underpin long term inclusive growth



2 Accelerating transition to the future economy

A ground-breaking investment programme to accelerate net zero transition and boost global exports

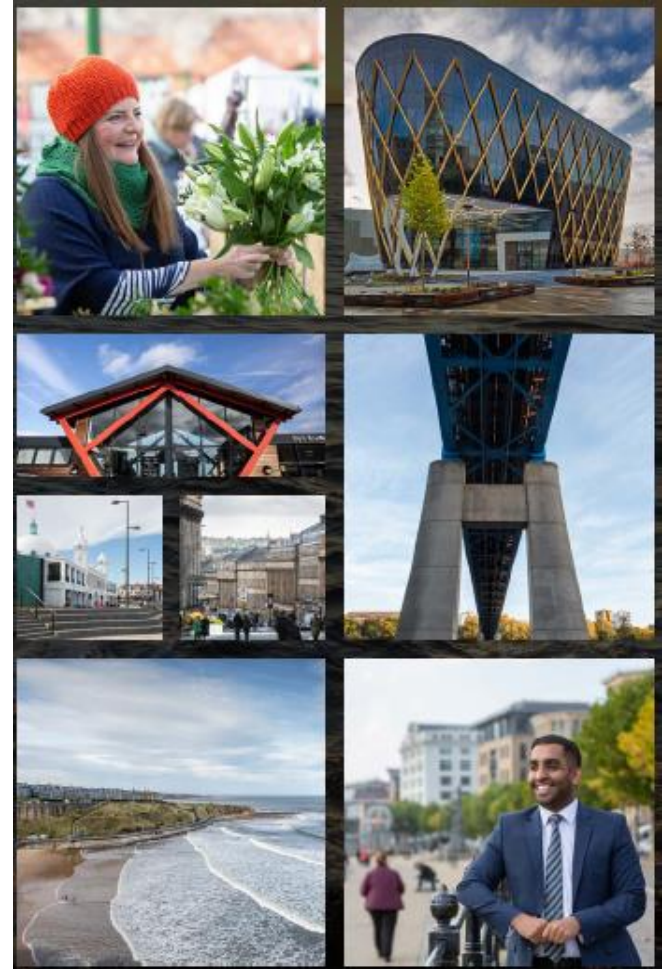


3 Supporting our businesses, high streets and places

Front-loading investment in place recovery, housing and critical business support

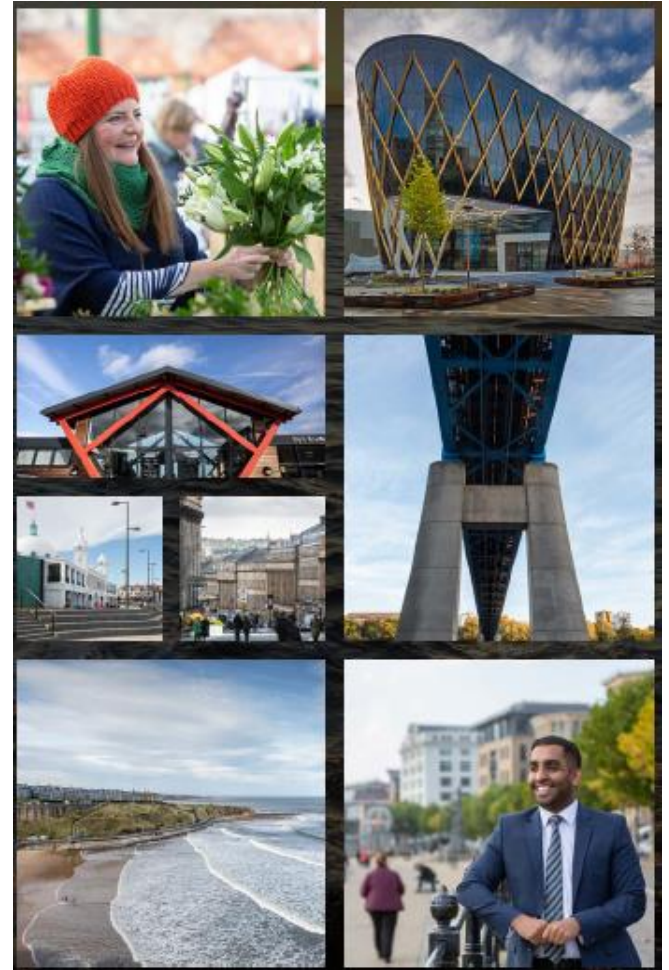
Collaborative Projects

- **Data, insight and cross-sector commissioning** – co-investment in the National Centre for Innovation in Data to support recovery and development of evidence-based policy making and evaluation
- **Building new markets for climate and age-ready services** – through our National Innovation Centre for Ageing and climate investments
- **Bringing together regeneration and public service reform** – through our Centre for Ageing and Vitality and growth ‘corridors’
- **Climate-ready manufacturing & energy** – through major investment in electric drive chain research & ‘Tyne and Blyth’ agenda
- **Rural Innovation** – working together to support SME productivity, digital connection and post-Brexit models of agri & energy



A new way of working – challenges & opportunities

- **A different model of MCA – University collaboration** – based on shared values & shared commitment to inclusive and sustainable economic recovery
- **New ways of working** – crisis and complexity mean we need to get beyond the transactional... and into co-design for places and communities
- **Focusing on translation, impact and relevance** – turning world class R&D and education into value for communities, economy and UKPLC
- **Understanding ‘anchor & cluster’ impact** – with a huge economic footprint, ability understand places and communities and to shape markets and create new civic spaces
- **Nature of Covid recovery** – no ‘back to normal’... so how can we model a new way of working and a different set of outcomes?



Glasgow City Region Case Study

Kevin Rush

Director of Regional Economic Growth
Glasgow City Region

Des McNulty

AVP University of Glasgow,
Vice Chair, Commission for
Economic Growth

INSTITUTIONAL LANDSCAPE

NATIONAL PICTURE
(INCLUDING BUT NOT LIMITED TO)



LOCAL DELIVERY
(DIDN'T TAKE ACCOUNT OF
METROPOLITAN REALITIES)



CITY DEAL
(REQUIRED NEW WAYS OF WORKING
AND INSTITUTIONAL BODIES)



REGIONAL ECONOMIC APPROACHES

POLICY DEVELOPMENT

POLICY DEVELOPMENT IN SCOTLAND

- No Scottish equivalent of Resolution Foundation, Policy Exchange or IFS
- Universities have helped fill policy gaps

RECENT REGIONAL APPROACH

- Created an Intelligence Hub and set up Commission for Economic Growth

ORGANISATIONAL DELIVERY

BODIES

- REGIONAL PARTNERSHIP
- GLASGOW ECONOMIC LEADERSHIP
- CHAMBER OF COMMERCE
- UNIVERSITY / HEALTH BOARD

DELIVERY

- 3 UNIVERSITY LED INNOVATION DISTRICTS
- CLYDE GATEWAY
- MISSION CLYDE

COVID RESPONSE

- GLASGOW ECONOMIC RECOVERY GROUP QUICKLY SET UP
- MULTIPLE ORG'S – PUBLIC AND PRIVATE
- FOCUSED ON ACTIONS

THE EMERGING ROLE OF UNIVERSITIES

CURRENT PRIORITIES

CONNECT,
COLLABORATE AND
COMMUNICATE

- **Health** – links with NHS, Lighthouse, precision medicine.....
- **Tackling disadvantage** – Academic Advisory, Social Recovery Taskforce....
- **Green recovery** – creating links to recovery, Covid to COP 26 prep....
- **Digital and data analytics** – linking Urban Big Data Centre with Councils

FUTURE CHALLENGES AND OPPORTUNITIES

- **MAINTAINING AND EXTENDING THE CULTURE OF COLLABORATION**
- **HOW CAN UNIVERSITY ADAPT INTERNALLY TO BECOME MORE RESPONSIVE TO NEEDS OF CIVIC PARTNERS?**
- **HOW DO UNIVERSITIES BEST UTILISE THEIR STRENGTHS AS ANCHORS**
- **UNIVERSITIES TO COLLABORATE TO SUPPORT 'LEFT BEHIND' PLACES**
- **HOW DO WE BEST DISSEMINATE KNOWLEDGE AND USE INTERNATIONAL AS WELL AS UK NETWORKS/CONNECTIONS**

The way ahead for developing better civic university contributions to regions

Recommendations and next steps

Open Q&A and comments with audience and speakers

Hosted by Simon Collinson



UNIVERSITY OF
BIRMINGHAM

CITY
REDI

WM
REDI



@CityREDI
@civicuniversity
#trulycivic

Keeping up with the Network

- Website
- Newsletter
- Twitter

Thank you for joining us today, next webinar:
November 2020



CITY REDI

@CityREDI



WM REDI

@WM REDI

Sign up to our mailing list to find out about our news, blogs and latest events -

cityredi@contacts.bham.ac.uk



www.civicuniversitynetwork.co.uk

CIVIC UNIVERSITY NETWORK

Welcome to the Civic University Network website

GET INVOLVED



Civic University Network

@civicuniversity

Lead by @sheffhallamuni alongside @icstudiesuk and @NCCPE

Joined May 2020

179 Following 357 Followers

Followed by Research4All, Jane Robinson, and 29 others you follow

Tweets Tweets & replies Media Likes

Civic University Network @civicuniversity · Jul 1

Our colleagues @LivUni have published a report on the impact of Covid-19 on Liverpool. The report was cited by @lpoolcouncil as part of the evidence base for its own Economic Recovery and Renewal Plan to Government released last week. Well worth a read

liverpool.ac.uk/media/livacuk/...

Contact the Civic University Network Team via email – civicuniversity@shu.ac.uk

Find details below of the Network Partners for specific areas of interest:

Civic University Network Partners' Thematic Leads		
Building your Civic Agreement	Paul Manners	Paul.Manners@uwe.ac.uk
Community Engagement	Emily Morrison	emily.morrison@youngfoundation.org
Covid Response	Simon Collinson John Goddard	S.Collinson@bham.ac.uk john.goddard@newcastle.ac.uk
Devolved Nations	Des McNulty	Des.McNulty@glasgow.ac.uk
Education	Greg Burke	Greg.Burke@shu.ac.uk
Local Government	Jane Robinson	Jane.Robinson@newcastle.ac.uk
London Network	Phillipa Lloyd Emily Burns	P.Lloyd@qmul.ac.uk emily.burns@qmul.ac.uk