



Civic University
Network

Consultation and evidence gathering webinar Resource pack



@civicuniversity

civicuniversitynetwork.co.uk

This resource pack contains the slides and links shared during the Civic University Network webinar exploring the role of consultation and evidence gathering in developing civic agreements.

The webinar featured three presentations:

- Emily Morrison (Institute for Community Studies): Approaching consultation – some framing remarks
- Nina Ruddle (Wrexham Glyndwr University): A co-creation approach
- Bec Riley (City-REDI): The City-REDI Journey

[A recording of the session can be accessed here.](#)





Civic University
Network

Consultation and evidence gathering webinar

Paul Manners

National Coordinating Centre
for Public Engagement

Emily Morrison

Institute for Community
Studies



@civicuniversity

civicuniversitynetwork.co.uk



Truly Civic: Strengthening the connection between universities and their places



The final report of the UPP Foundation
Civic University Commission

We think that the starting point for Civic University Agreements has to be understanding local populations, and asking them what they want.

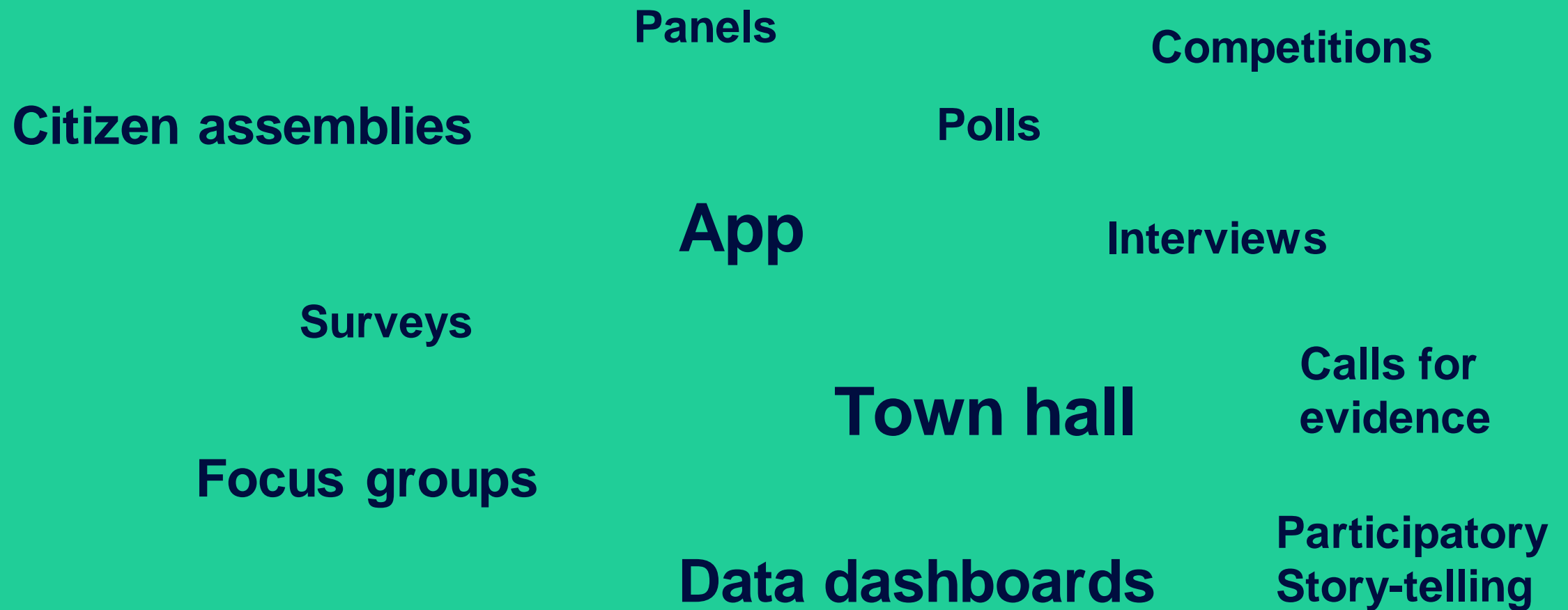
Analysis of their place and people's priorities are essential.

Consultation and Evidence Gathering

Civic University Network

Emily Morrison, Head of the Institute for Community Studies

**“If 2,000 people want a pond, that doesn’t tell
you where to fish.”**



“You wait 20 years to be asked what you want and then three consultations come along at once”

How do you start?

- The perils of ‘over-consultation’ without noticeable change.
- Use others’ data – better collaboration at local level.
- Make the most of approaches that ‘give back’ to those you are requesting from.

Who benefits from your consultation?

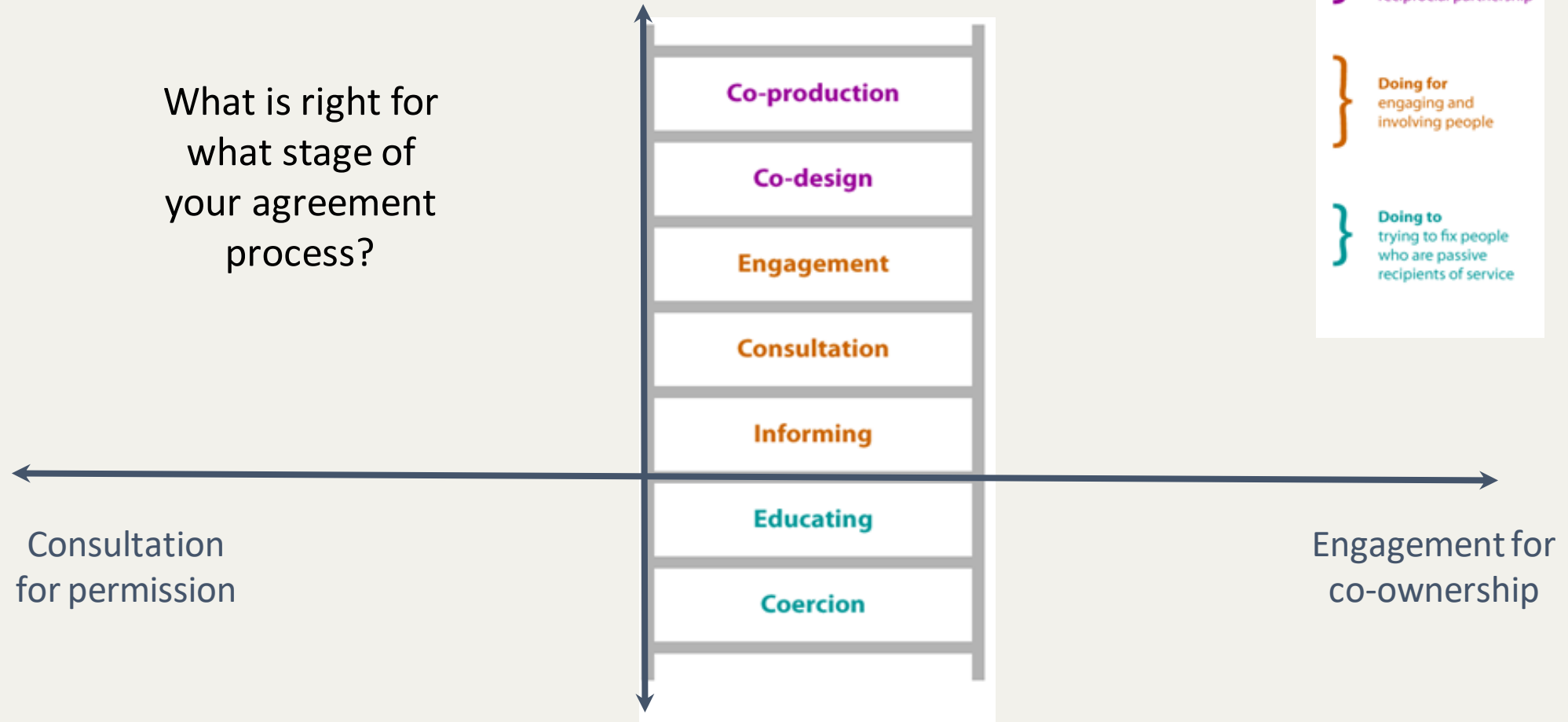
- Building relationships and trust.
- The room is political.
- Do you actually know what matters – and is what you need to know *which solution will work?*

What are you focusing on and why?

- Transparency about what is driving your interest
- Is this a one-off exercise or long term (social) contract?
- The unpopular policy issue is often where you can create greatest change – and trust.

Why consult?

What is right for
what stage of
your agreement
process?



“When will they stop asking us what we want and start doing?”

Consultation → Public Engagement

- What can you build in from the university that engages people in your broader work *during* consultation?
- How can you make the issues accessible and visible as well as asking people for their input?
- Who else could take part?

Consultation → Intelligence

- Where can and should the ‘voice’ data you are collecting be integrated with other data at local level?
- Sense-making: once you have the data, how are checking you know what the implications are for what you do next?

Consultation → Innovation

- Move towards models which build in the pathway and funding for *action* from the start.
- You cannot tackle all issues at once.

Consultation → Realisation

Know where you *can* go before you start.

emily.morrison@youngfoundation.org
www.icstudies.org.uk

Q&A and links



Emily Morrison

Head

Institute for Community Studies

Arnstein's Ladder of participation, which informed Emily's 'Why Consult?' framework:

<https://www.citizenshandbook.org/arnsteinsladder.html>

Find out more about the Institute for Community Studies here:

<https://icstudies.org.uk/>



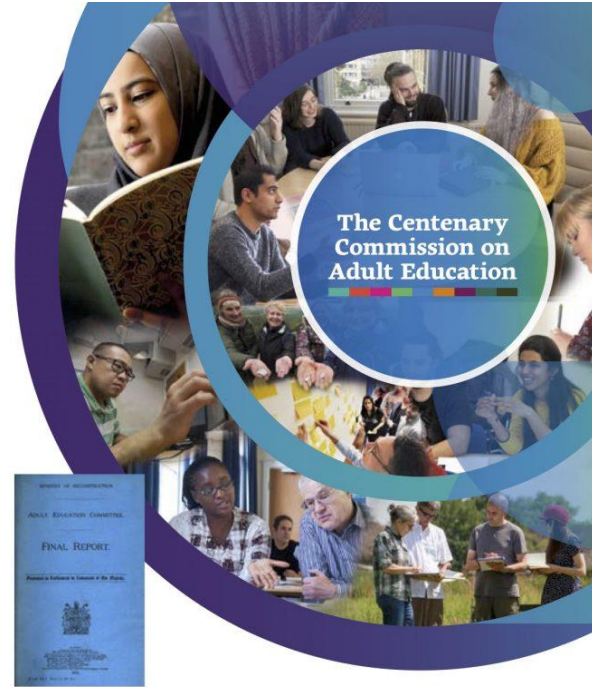
Civic University
Network

Q&A



John Holford

Robert Peers Professor of Adult Education
University of Nottingham



“A Permanent National Necessity...”

Adult Education and Lifelong Learning
for 21st Century Britain

The Centenary Commission on Adult Education report is at centenarycommission.org. You can follow it on twitter at @adulthood100. The "centenary" is that of the very important 1919 Ministry of Reconstruction report - there is link to that on the Centenary Commission website.

A co-created civic mission

January 2021

PRIFYSGOL
Glyndŵr
Wrecsam

Wrexham
Glyndŵr
UNIVERSITY

FfRhA Arian

TEF Silver

Nina Ruddle
Head of Public Policy Engagement
Wrexham Glyndwr University



IF WE WANT
TO ADDRESS
MENTAL
HEALTH

WE NEED TO
dig deeper

@ALYSERURIANI

MEDICAL MODEL

DSM

PATHOLOGIZATION

INDIVIDUALISM

pathophobia

discrimination

@ALISEKURIANI

[illegible]

Civic Mission Framework

for Wrexham Glyndwr University 2020-2030

PRIFYSGOL
glyndŵr
Wrecsam

Wrexham
glyndŵr
UNIVERSITY

COMMITMENT
& FOCUS.

Our mission is to help you:

End social inequality across North Wales by 2030.

Our aim is to be useful to you in this work by working with, and for, you innovating, co-creating, testing and delivering new approaches to:

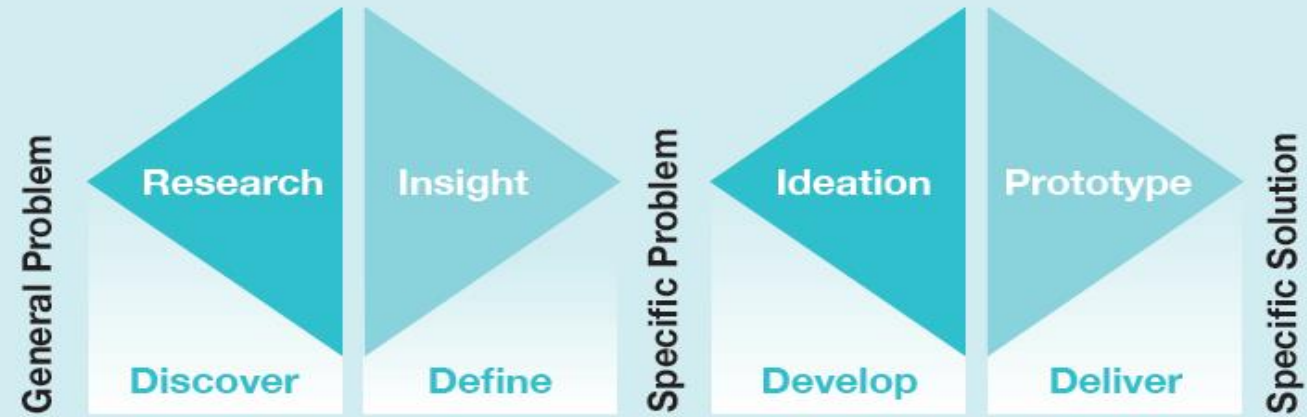
1. Community resilience
2. Keeping well
3. Leadership, Governance and whole system working

**CAPACITY
& ENABLE.**

OUTCOME.

Our Role in WGU is to enable collective action by:

Original concept by the
design council



To enable and deliver for this collective mission we would in partnership establish a 'North Wales Public Service lab' Learn together - Lead together



Civic Mission
Approach – Civic
Mission Partnership
Strategy

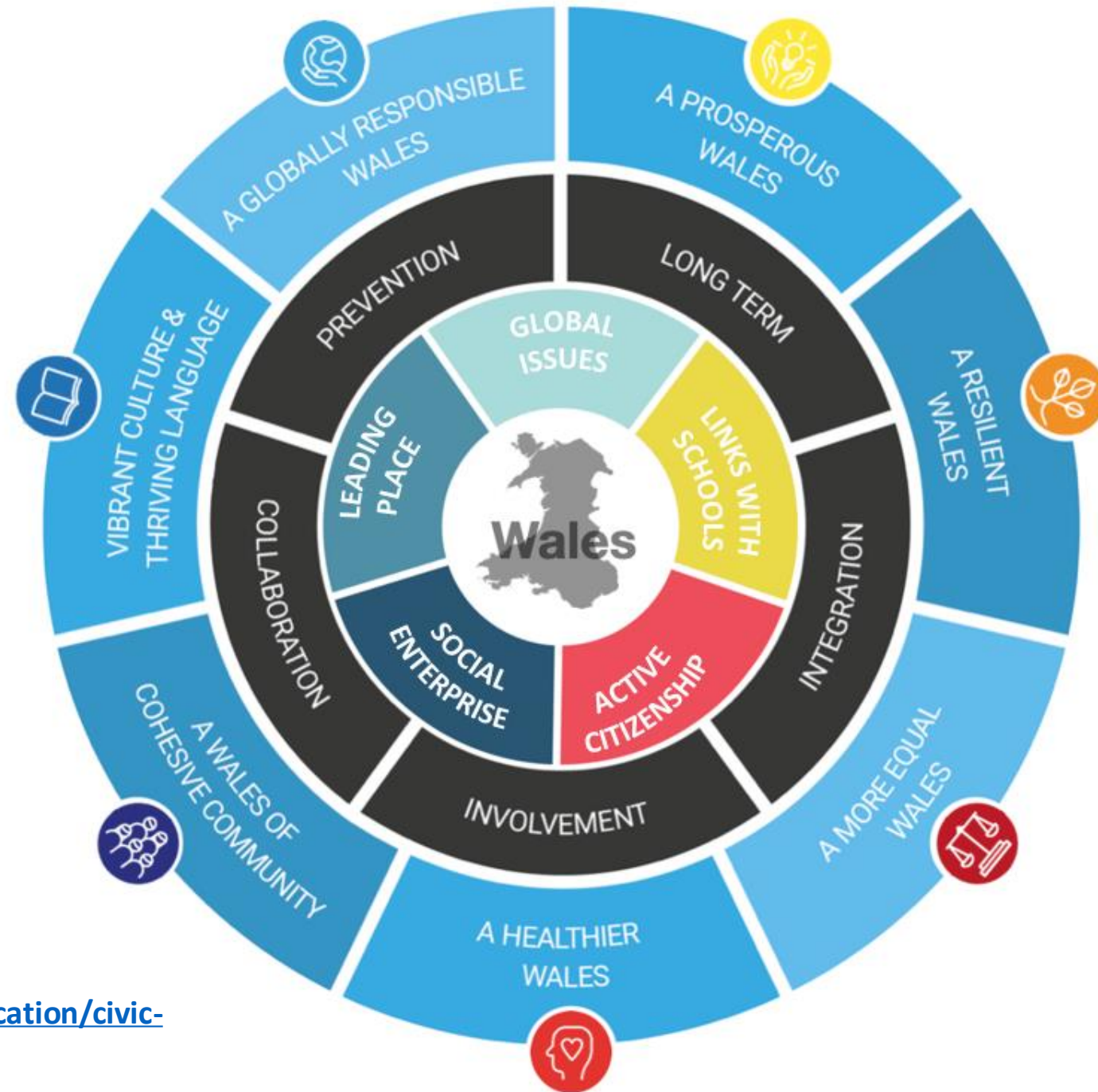


Don't just listen to me.....

- Clare Budden, CEO Clwyd Alyn Housing and Chair of 2025 social movement
- Glynne Roberts, Director of Well North Wales, Betsi Cadwalader Health Board
- Vicky Jones, North Wales Lead- ACE's Support Hub Wales
- Ashley Rodgers, North Wales Economic Ambition Board Chair of PACT
- Lyndsey Rawlinson, Head of Operations North East Wales, Natural Resource Wales
- Rachel Lewis, Consultant, Public Health Wales

Context in Wales

- Civic Mission Framework for Wales
- Launched Jan 2021



Any Questions.....

Nina Ruddle

Head of Public Policy Engagement

Nina.ruddle@Glyndwr.ac.uk

07809 538927

Resource pack available for Civic University network and

<https://www.glyndwr.ac.uk/en/AboutGlyndwrUniversity/CivicMission/>

<http://www.uniswales.ac.uk/publication/civic-mission-framework-wales/>

Q&A and links



Nina Ruddle

Head of Public Policy

Engagement

Wrexham Glyndwr University

Find out more about the Civic Mission work at Wrexham Glyndwr here:

<https://www.glyndwr.ac.uk/en/AboutGlyndwrUniversity/CivicMission/>

Access a longer presentation from Nina about her work, and a resource pack containing lots more information here:

<https://civicuniversitynetwork.com/resources/guide-to-creating-a-civic-university-agreement/striking-your-agreement/>

Nina also referend to their work around developing distributed academic leadership. The following are useful resources to find out more about their approach:

[Distributed academic development for leading educational change](#) (Advance HE): a video outlining the university's approach

[Re-imagining decision making after Covid-19](#) (Wonk HE blog aby Wrexham Glyndwr PVC, Claire Taylor)

Other useful references:

- Taylor, C. (2020) *The distributed educational development team: a case study*, chapter in Devecchi, C. and Potter, J. (eds) *Delivering Educational Change in Higher Education*. London: Routledge.
- Taylor, C., Heron, C., Horder, S., Hughes, C., Owen, A. and Pickles, N. (2020) *Leading Accelerated Educational Development*. Educational Developments Vol 21 No.3.
- Heron, C., Horder, S., Richardson, J. and Taylor, C. (2018) *The distributed educational development team*. Educational Developments Vol 19 No.2.



Civic University
Network

Rebecca Riley

Head of Research and Office for Data Analytics (ODA) at West Midlands Combined Authority and Director @CityREDI



@civicuniversity

civicuniversitynetwork.co.uk



City-REDI Journey

Rebecca Riley –

Business Development Director CityREDI

Head of Research and ODA WMCA

Director Midlands Engine Economic Observatory



Impact Objectives

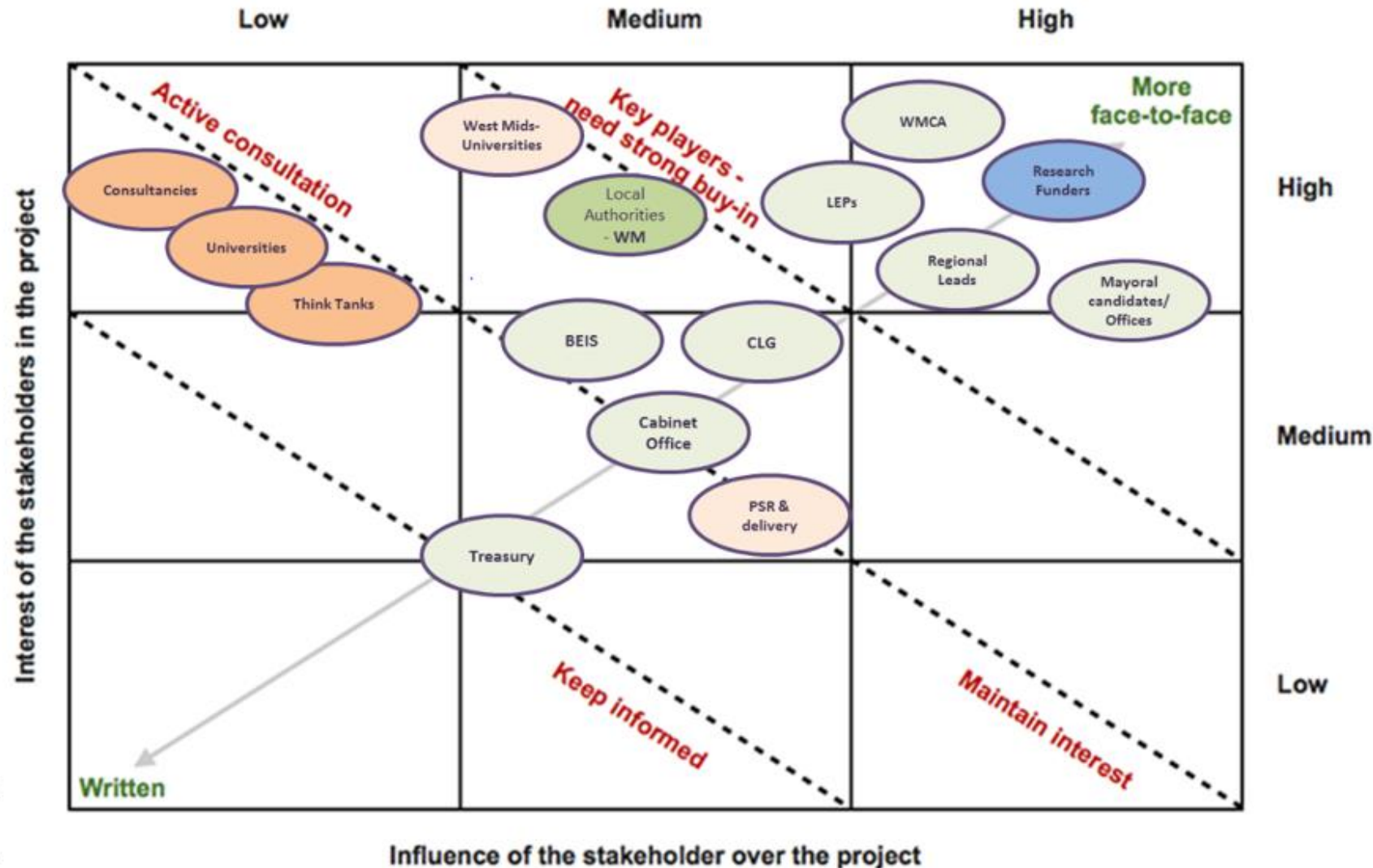
Influencing objectives:

- Support regional policy decision-making through the provision of intelligence based conclusions and (where appropriate) policy implications
- Monitor and evaluate the progress and impact of regional strategies and programmes
- Engage the region in determining regional data and intelligence priorities and seek better alignment of regional resources
- Coordinate and facilitate the delivery of agreed new research priorities where appropriate
- Provide effective access to intelligence to encourage higher standards of evidence-based decision-making
- Lead best data and intelligence practice by sharing best practice for research methods and specifications, backed up by an enquiry service
- This vision will be delivered through a *hybrid team* of academics, credible associates/secondees/partners and potentially PhD students, providing modelling, information, intelligence and research services

Skills and requirements

- **Academics who drive impact**
- **Professional services staff with a hybrid of research, consultancy and policy knowledge with an understanding of how universities work –grey space**
- **Ability to build teams, deliver research and engage policymakers**
- **Deliver to the market but maintain academic rigour**

Key Stakeholders - set up stage





Establishing a board

To Advise and
Guide

Build relationships
for Collaboration

Big strategic issues
and long term
problems

Active board
meetings

Identify direction
and opportunities
for research

Championing our
work

Head of the College of Social Sciences
Cities and Local Growth Unit, BEIS
Greater Birmingham Chambers of Commerce
West Midlands Combined Authority
Midlands Connect
Arcadis
PA Consulting
The Black Country Consortium Ltd
GBSLEP
Coventry and Warwickshire LEP
Birmingham City Council
Midlands Innovation
Metro Dynamics
West Midlands Growth Company
Aston University
KPMG
Deloitte



Day to day needs assessment

- **Secondments**



- **Advisory roles**
- **Engagement in partner activity**
- **Carrying out commissioned work with partners**
- **Delivering information and evidence services**

What does success look like?

As a...	I want to...	So that I can...	Success Criteria
City Mayor (politicians)	Promote the research assets of the region, embed them in our decision making, to improve outcomes for the people and businesses of the region	Ensure the region is making good decisions on reliable, robust evidence which stands up to scrutiny and provide the mechanism to promote this	Access to the building for events to promote activity to local, national and international policy community based on collaborative research. Utilisation and embedding of the research in our decision making processes. Improved long term outputs
Regional Policy Maker	Understand the research going on in the university that can inform my policy making	Make better decisions on how to address regional policy issues and design policy on sound evidence	Access to wide range of research relevant to regional policy, through workshops, meetings, events and shared collaboration space. Embedding research in the policy developed locally
National Policy Maker	Understand the research going on in the university that can inform my policy making	Make better decisions on how to address national and regional policy issues and design policy on sound evidence	Coming out of London to the regions to access to wide range of research relevant to regional/national policy, through workshops, meetings, events and shared collaboration space
Public Sector Investment Decision Maker	Use latest research and evidence in developing investment cases	Make sure I am investing in the right interventions and projects to improve outcomes for people and businesses in the region	Engagement with academics on business case development, evaluation, accessing and utilising latest research in specific policy areas
Local Researchers and Analysts	Access new and interesting data and to solve societal problems and build my skills as an analyst/researcher	Ensure actions are built on sound evidence and data and I can use the latest techniques within my organisation	Access to wide range of data and training relevant to regional policy/action, through workshops, meetings, events, shared collaboration space and training and development
Businesses	Use latest research thinking to develop my business. Choose the right investments for improved innovation and productivity	Be profitable and survive.	Better understanding and access to research. Opportunities to co-develop innovations and support in evaluating and selecting R&D investments.

Q&A and links



Bec Riley
Business Development
Director
City-REDI

@rileyresearch @cityredi



Find out more about City-REDI's work here:

<https://www.birmingham.ac.uk/research/city-redi/index.aspx>

The discussion touched on 'grey space' professionals working in hybrid engagement roles (sometimes known as 'boundary spanning'). Find out more here:

warwick.ac.uk/fac/cross_fac/academy/activities/seminars/thirdspace

Helen Featherstone: A while back I co-wrote some reflections with some other "spanners" or as we called ourselves "hybrids"

hearingthevoice.org/wp-content/uploads/2020/10/WKPS_TheHybridAcademic_PDF_Feb.pdf

Helen has written a case study about her role leading the Civic Agreement work at the University of Bath:

<https://civicuniversitynetwork.com/wp-content/uploads/2021/01/Case-Study-University-of-Bath.pdf>

Q&A



Fiona Lettice

PVC Research and Innovation
UEA



UEA Civic Impact report

Fiona described how UEA went about commissioning this report and its contribution to their civic strategy

https://www.uea.ac.uk/documents/746480/2855738/12717_UEA_ConnectingPeople_Places_Brochure_300519_Web_LR.pdf



Civic University
Network



Welcome to the Civic University Members' Area

The Civic University Network is here to support universities across the UK to develop and embed civic aspirations at an institutional level, and work with government and strategic partners to ensure that a university's geographic role and responsibility is used more effectively.

LATEST FORUM TOPICS

Forum

Creating a Civic University Agreement

In this forum, we will explore the motivations behind the creation of your Civic University Agreement or equivalent strategic framework, or if your institution has decided not to create one, your civic journey so far.

CUAs: Developing your approach

In this forum we will explore themes relate to developing a civic approach, and some of the key challenges associated with this.

CUAs: Striking your agreement

In this forum, we will explore the process of striking agreements, including prioritising partners, creating realistic and credible

With thanks to our three speakers.

Please visit the Civic University Network's Members Area to access more civic resources and to connect with other members of the network

civicuniversitynetwork.co.uk/members-area/



@civicuniversity