

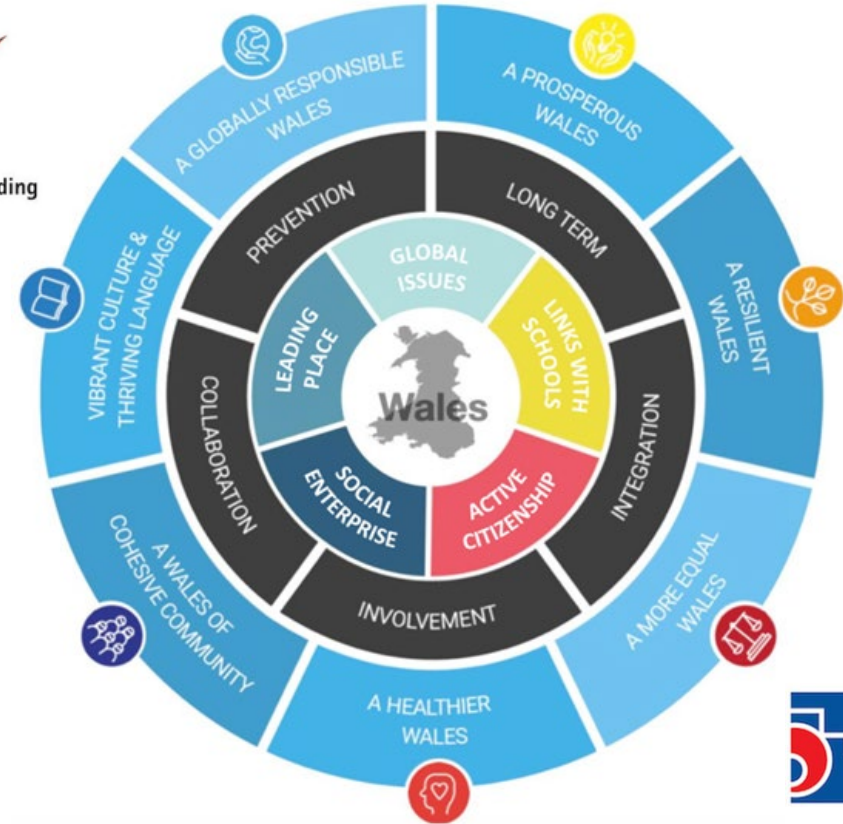
Civic Mission in Wales

- Policy Context in Wales
- Approaches to Civic Mission in Wrexham and Cardiff
 - Leadership and Learning
- The Challenges & The Opportunities

hefcw

Cyngor Cyllido Addysg
Uwch Cymru
Higher Education Funding
Council for Wales

CARDIFF
UNIVERSITY
PRIFYSGOL
CAERDYDD



Universities
Wales
Prifysgolion
Cymru

Prof Claire Taylor, Deputy Vice Chancellor
Nina Ruddle, Head of Public Policy Engagement
Ed Bridges, Public Affairs and Civic Mission Manager

PRIFYSGOL
Glyndŵr
Wreccsam

Wrexham
Glyndŵr
UNIVERSITY

Policy Context in Wales

- Well-being of Future Generations (Wales) Act 2015
- Tertiary, Education and Research (Wales) Bill- Move towards new commission for Tertiary Education and Research (CTER)
- Universities Wales' Civic Mission Framework
- HEFCW's Research and Innovation: The Vision for Wales
- 'The Hazelcorn Review' – Towards 2030. A Framework for Building a World-class Post-compulsory Education System for Wales.
- Welsh Government's Post-Compulsory Education and Training Strategic Vision



Civic Mission Partnership Strategy – The Wrexham Approach

Overview for Wrexham Glyndwr University 2020-2030

COMMITMENT & PURPOSE.

Our mission is to work together with partners to:

End social inequality across North Wales by 2030.

Our aim is to be useful to you in this work by working with, and for, you innovating, co-creating, testing and delivering new approaches to:

- 1. Leadership, governance and whole system working**
- 2. Building community resilience**
- 3. Keeping well**

LABORDY
GWASANAETH
CYHOEDDUS
GOGLEDD
CYMRU



NORTH
WALES
PUBLIC
SERVICE
LAB

GALLUOGWYD GAN
ENABLED BY

BRIFYSGOL GLYNDŴR WRECSAM
WREXHAM GLYNDŴR UNIVERSITY

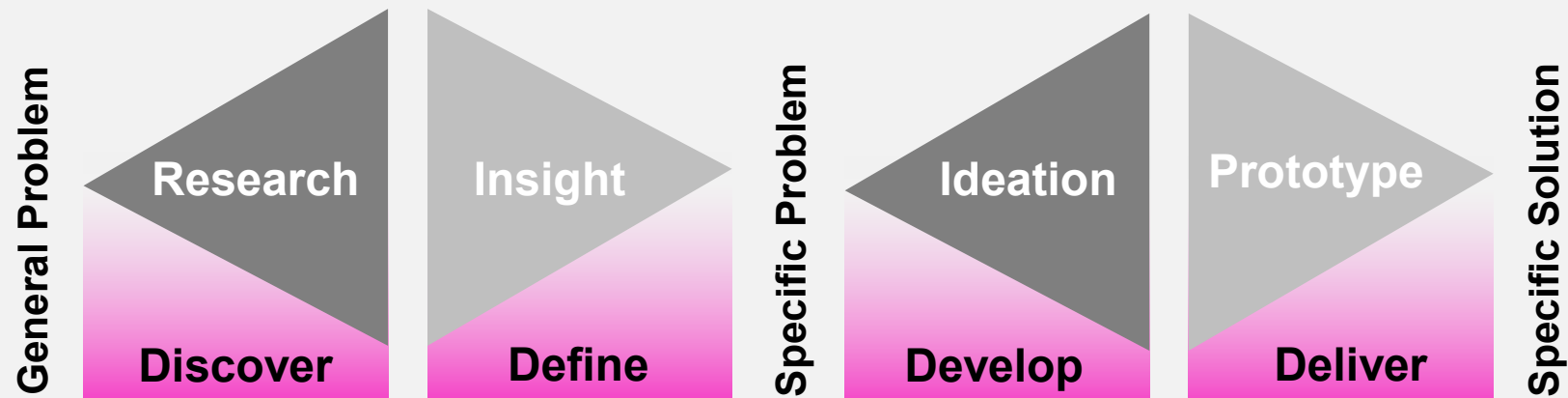
PRIFYSGOL
Glyndŵr
Wreccsam

Wrexham
Glyndŵr
UNIVERSITY

CAPACITY
& ENABLE.

Our role in WGU is to enable collective action by:

Original concept by the
design council



OUTCOME.

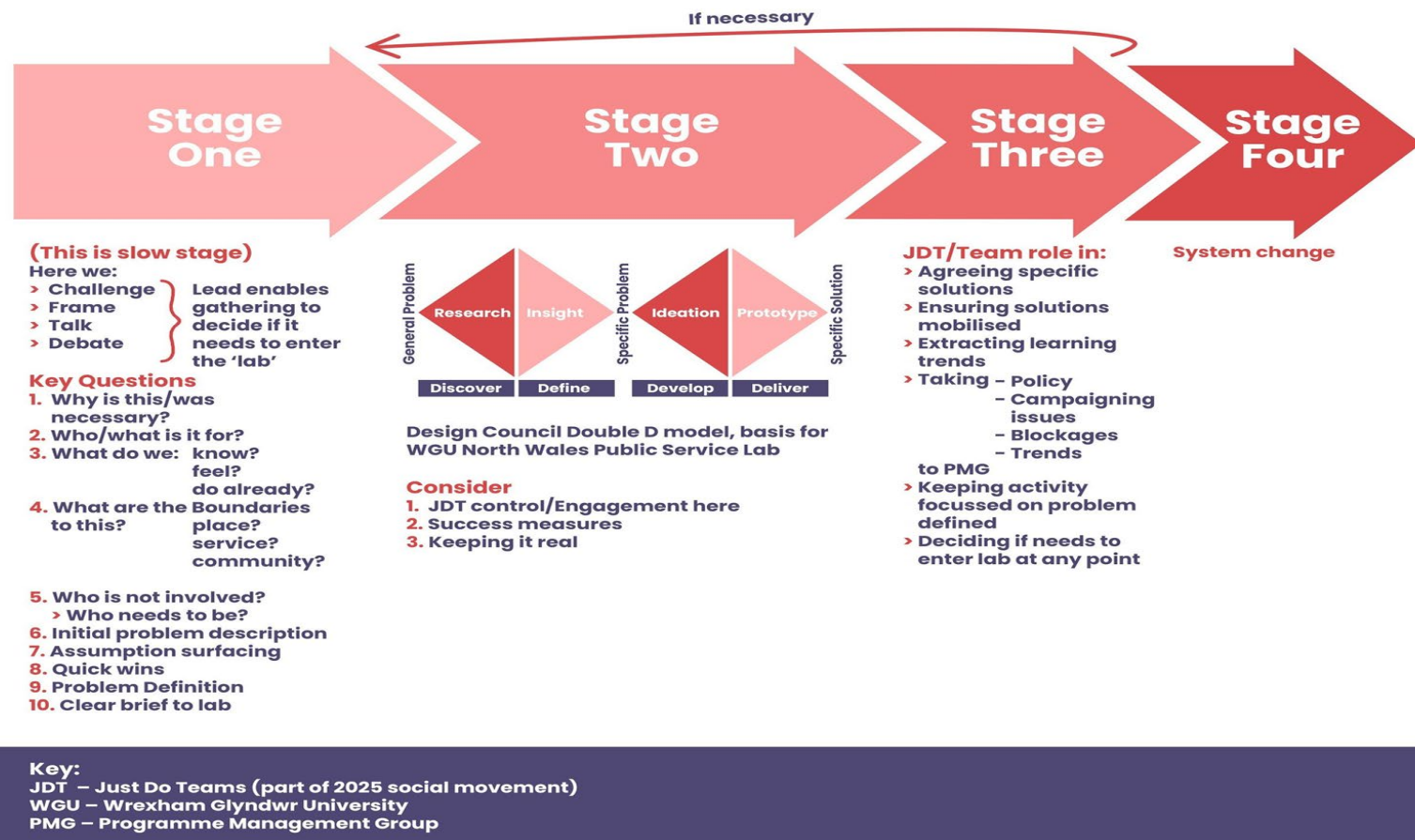


**SUSTAINABLE
DEVELOPMENT
GOALS**

Leadership, governance and whole system working

- **NW Public Service Lab**

- Community
- Conversations
- Commitment to useful work



LABORDY
GWASANAETH
CYHOEDDUS
GOGLEDD
CYMRU



NORTH
WALES
PUBLIC
SERVICE
LAB

GALLUOGWYD GAN
ENABLED BY

BRIFYSGOL GLYNDŴR WRECSAM
WREXHAM GLYNDWR UNIVERSITY



PRIFYSGOL
Glyndwr
Wreccsam

Wrexham
Glyndwr
UNIVERSITY

Community Resilience

- Impact through stories



GIG
CYMRU
NHS
WALES

Bwrdd Iechyd Prifysgol
Betsi Cadwaladr
University Health Board



Comisiynydd
Plant Cymru
Children's
Commissioner
for Wales

PRIFYSGOL
Glyndŵr
Wrecsam

Wrexham
Glyndŵr
UNIVERSITY

Community Resilience

- Children's University



Keeping Well

- TrACE-informed University and Community

GWEITHIO I
DDOD
Sefydliad
Gwybodus
TrACE
2021



WORKING TO
BECOME
TrACE
Informed
Organisation
2021



PROFIADAU NIWEIDIOL MEWN PLENTYNDOD
ADVERSE CHILDHOOD EXPERIENCES



2025

LABORDY
GWASANAETH
CYHOEDDUS
**GOGLEDD
CYMRU**



**NORTH
WALES
PUBLIC
SERVICE
LAB**

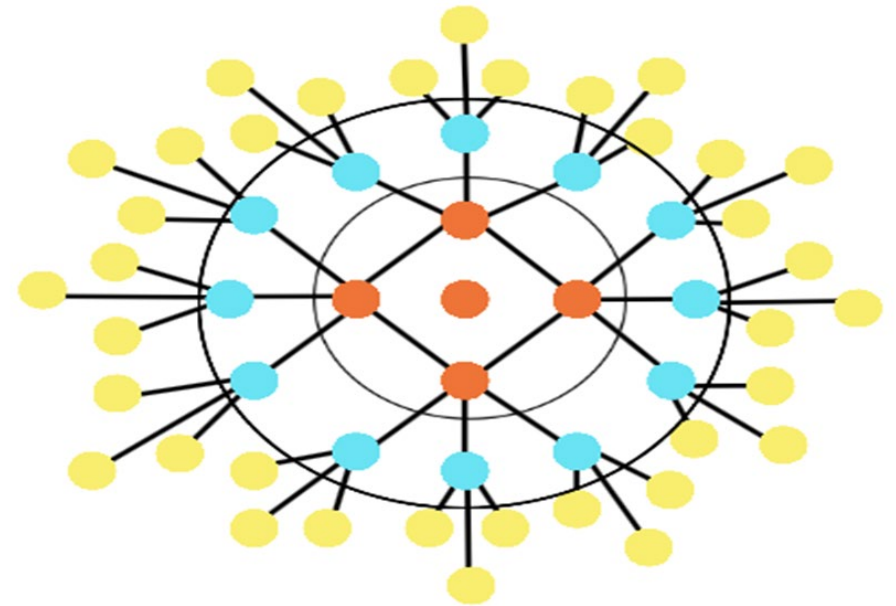
GALLUOGWYD GAN
ENABLED BY **BRIFYSGOL GLYNDŴR WRECSAM
WREXHAM GLYNDŴR UNIVERSITY**

PRIFYSGOL
**Glyndŵr
Wrecsam**

**Wrexham
Glyndŵr
UNIVERSITY**

Key Challenges- If Civic Mission is the answer what is the question?

- **Clear purpose and understanding of people and place**
- **Long term** – building **trust** and relationship takes time to build and maintain
- Measuring **impact and evidence** the creativeness and partnership – who are we measuring for and why?
- The **Power of Storytelling** and owning the narrative to shape the future – Language and lenses we use
- **Is it a 'third mission' or THE mission of a University?**



LABORDY
GWASANAETH
CYHOEDDUS
GOGLEDD
CYMRU



NORTH
WALES
PUBLIC
SERVICE
LAB

GALLUOGWYD GAN
ENABLED BY BRIFYSGOL GLYNDŴR WRECSAM
WREXHAM GLYNDŴR UNIVERSITY

PRIFYSGOL
Glyndŵr
Wrecsam

Wrexham
Glyndŵr
UNIVERSITY



Cardiff University's civic mission: strategy, examples, context

- Three priorities in our refreshed sub-strategy:
 - 1) Catalysing Wales' green recovery
 - 2) Building Wales' skills for the future
 - 3) Embracing community engagement
- How do we build on these?
- How does this fit with the Welsh policy context?

Three challenges

- Collaboration vs competition – long-term culture shift needed
- Different funding streams – being expected to “pick a side”
- Big versus small institutions – the Goldilocks challenge



Civic Mission in Wales- the Opportunities

- **Tertiary Education and Research (Wales Bill) 2021-** promotion of civic mission priority area
- **Co-production and leading across systems** – active listening to communities and partners with clear purpose
- Create **capacity** to develop civic mission agenda and work across HEI's and with partners – Just Do approach
- Civic Mission University **network and framework for Wales** Civic Mission | Universities Wales (uniswales.ac.uk)
- **Take risks and be bold**



Civic University
Network



PRIFYSGOL
glyndŵr
Wrecsam

Wrexham
glyndŵr
UNIVERSITY